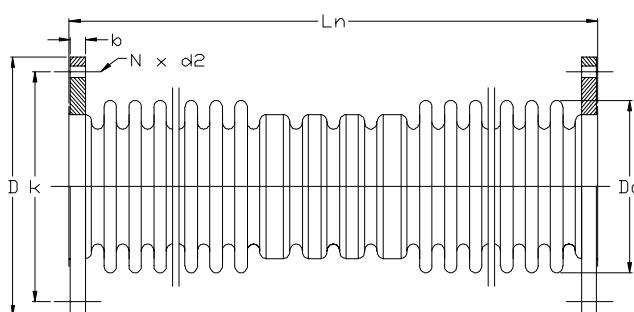




## Expansion joints

**Bellow:** AISI 321 (1.4541) steel (2 layer).  
**Flanges:** RSt.37.2. DN40 - DN175:  
 acc. to DIN 2573 (PN6)  
 DN200 - DN1200: acc. to DIN 86044  
 Other standards or material at  
 request.

Temperature > 600°C  
 Design pressure > 1,0 BarG  
 Produced acc. to EJMA-standard  
 Turnable flanges or stub ends  
 Other specifications at request



### Technical specification at 350°C:

Type	Max. movement (+/-)		Max. reaction force		Spring rate	
	Axial (mm)	Lateral (mm)	Axial (daN)	Lateral (daN)	Axial (N/mm)	Lateral (N/mm)
VTAD-0040	30	50	171	20	57	4
VTAD-0050	32	50	195	30	61	6
VTAD-0065	50	50	250	40	50	8
VTAD-0080	38	50	205	30	54	6
VTAD-0100	32	41	211	70	66	17
VTAD-0125	34	39	201	74	59	19
VTAD-0150	39	36	207	90	53	25
VTAD-0175	43	34	249	136	58	40
VTAD-0200	43	31	482	257	112	83
VTAD-0250	58	26	534	330	92	127
VTAD-0300	58	30	522	603	90	201
VTAD-0350	47	36	555	400	118	111
VTAD-0400	45	32	630	528	140	165
VTAD-0450	60	36	702	727	117	202
VTAD-0500	64	34	768	830	120	244
VTAD-0550	64	30	819	1005	128	335
VTAD-0600	82	43	1287	1264	157	294
VTAD-0700	81	36	1409	1598	174	444
VTAD-0800	79	31	1525	1975	193	637
VTAD-0900	79	29	1414	2163	179	746
VTAD-1000	79	26	1541	2623	195	1009
VTAD-1100	106	28	1696	3466	160	1238
VTAD-1200	106	26	1823	4116	172	1583

Type	Ln (mm)	Flanges acc to DIN 2573 (PN6)						Weight (kg)
		D (mm)	b (mm)	k (mm)	N (ant.)	d2 (mm)	Do (mm)	
VTAD-0040	275	130	16	100	4	14	60	3,5
VTAD-0050	275	140	16	110	4	14	70	4
VTAD-0065	275	160	16	130	4	14	88	4,5
VTAD-0080	340	190	18	150	4	18	101	7
VTAD-0100	280	210	18	170	4	18	128	8
VTAD-0125	300	240	20	200	8	18	156	11
VTAD-0150	300	265	20	225	8	18	187	12,5
VTAD-0175	300	295	20	255	8	18	212	13,5
		Flanges acc. to DIN 86044						
VTAD-0200	300	320	16	280	8	18	240	13
VTAD-0250	300	375	16	335	12	18	296	17,5
VTAD-0300	300	440	16	395	12	22	347	21
VTAD-0350	400	490	16	445	12	22	379	28
VTAD-0400	400	540	16	495	16	22	432	31
VTAD-0450	400	595	16	550	16	22	483	36
VTAD-0500	400	645	16	600	20	22	534	39
VTAD-0550	400	703	20	650	20	22	585	53
VTAD-0600	500	754	20	700	20	22	640	61
VTAD-0700	500	858	20	800	24	22	742	70,5
VTAD-0800	500	958	20	900	24	22	843	80
VTAD-0900	500	1060	20	1010	28	22	949	90
VTAD-1000	500	1162	20	1110	32	22	1051	99,5
VTAD-1100	500	1266	20	1210	32	22	1155	113
VTAD-1200	500	1366	20	1310	36	22	1255	122

### Norway

P.O.Box 765, N-3196 Horten, Norway  
 Tel: +47 33 07 07 50 Fax: +47 33 07 00 68  
 e-mail: apn@apn.no

### Sweden

Norrsund 1859, S-760 17 Blidö, Sweden  
 Tel: +46 176 20 78 80 Fax: +46 176 20 78 99  
 e-mail: info@vibratec.se